

m/y O'CEANOS  
*Defining Excellence*







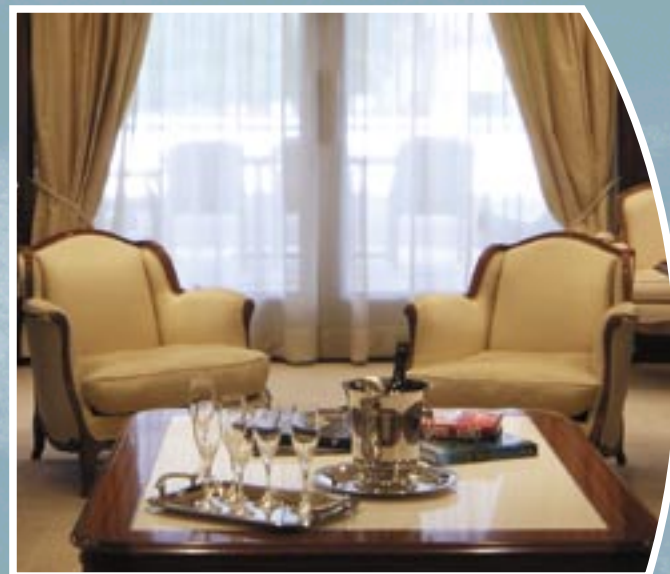


## *Introduction*

*T*he fabulous Motor Yacht O'Ceanos, 49 meters of excellence in engineering and design and fitted with Italy's finest of woods, marble and fabrics, creates an environment of spectacular beauty and sophistication.







## *Main Salon*

*T*he extremely spacious and eloquently laid out salon is the perfect setting for intimate conversation and vibrant entertainment. It is here that guests partake in a leisurely cocktail or a captivating cinema session with the most up-to-date audio visual equipment.







## *Dining Area*

*G*uests dine at the exquisitely grand rosewood table located adjacent to the open salon. The formal dining area, comfortably seating guests in supreme luxury, is the ideal setting for the chef to showcase his art. It is here where unique and spectacular creations of international cuisine are savored in ultimate style.





## Owner's Suite

Spanning two-thirds of the Upper Deck is the Owner's Cabin and adjoining private office. With a remarkable panoramic view of the sea and private balcony, guests will find it hard to leave this surreal sanctuary. Designed in modern style it features a king-size bed, walk-in-closet, en suite bathroom, and is equipped with a full entertainment system.

Directly off of the Owner's Cabin, separated by an adjoining door and hallway, this transferable space serves as either the private office of the Owner's Cabin or as an Upper Salon set to entertain quiet moments of reading or interactive sessions of game playing and movie watching.







## *Vip Suite*

The VIP Cabin, set in deep rich mahogany paneling, and the adjacent Twin Cabin, with a lighter finish of burlwood paneling, have the unique ability to be transformed into a luxurious suite. By simply closing off the area a private lobby between the two cabins is created and thus a separate wing of complete privacy prevails.

The VIP Cabin features a queen-size bed, a desk that can be used as a boudoir or office space, en suite bathroom and large windows along its starboard side. Guests will have little to envy from the Owner's Suite in this elegantly laid out space.







## Double Cabin

Located on the Lower Deck, the 2 VIP Double Cabins are designed with the same precision and detail as the rest of the areas on board. Their burlwood and cherry finishes provide a uniqueness while creating an ambiance of warmth.

## Twin Cabin

The two Twin Cabins on the Lower Deck, which feature bleached oak walls and ceiling panels, include Pullman beds for alternative sleeping arrangements.







## Sun Deck

The open-air lifestyle on board is exemplified by the 300 square meter sundeck. The extendable tables seating up to twenty-four, the full equipped bar with a barbeque, and the four sprawling sun beds and Jacuzzi, all work together to create an environment unlike any other. Guests can dine under the stars in pure delight, bask in the sun after a soak in the Jacuzzi or simply enjoy the breeze while relaxing in the shade.







**TECHNICAL SPECIFICATIONS**

LOA: 161.7' (49.0m)  
Beam: 29.7' (9.0 m)  
Draft: 7.6' (2.3m)  
Speed (Max/Cruising): 18.5/16  
Engines: 2 x CAT 3512B (1380 KW each)  
Generators: 2 x CAT 3306B (145 KW each) / Emergency Gen. ONAN 33 KW  
Diesel / Fresh Water Capacity: 80000 / 28000 (lts)  
Material of Construction: Aluminum  
Flag of Registry: Hellenic  
Classification: ABS 100 A1 AMS & RINA ✕ 100 A1 LMC CCL  
Number of Guests: 12 - 14  
Crew: 11  
Year of Delivery: 2006

**ACCOMMODATIONS**

Seven Cabins  
Owner's Suite on the Upper Deck with a Private Office  
VIP Suite on the Main Deck with an adjacent Twin Cabin  
Two Double Cabins and two Twin Cabins on the Lower Deck

All Cabins and Salons fitted with Plasma LCD Monitors and Home Theatre Systems

**EQUIPMENT / FACILITIES**

Fully Air Conditioned  
Satellite Communication (phone/fax), Satellite TV  
SSB Transceiver, VHF Radio, Internal Telephones  
Personal Computer, Internet and E-mail Access  
Autopilot, Color Radar, Echo Sounder  
Gyro Compass / Plotter / GPS  
Navtex Weather Fax  
Stabilizers - Bow Thruster  
Closed Circuit Security TV  
Water and Ice Makers, Laundry Facilities

**SPORTS AND LEISURE**

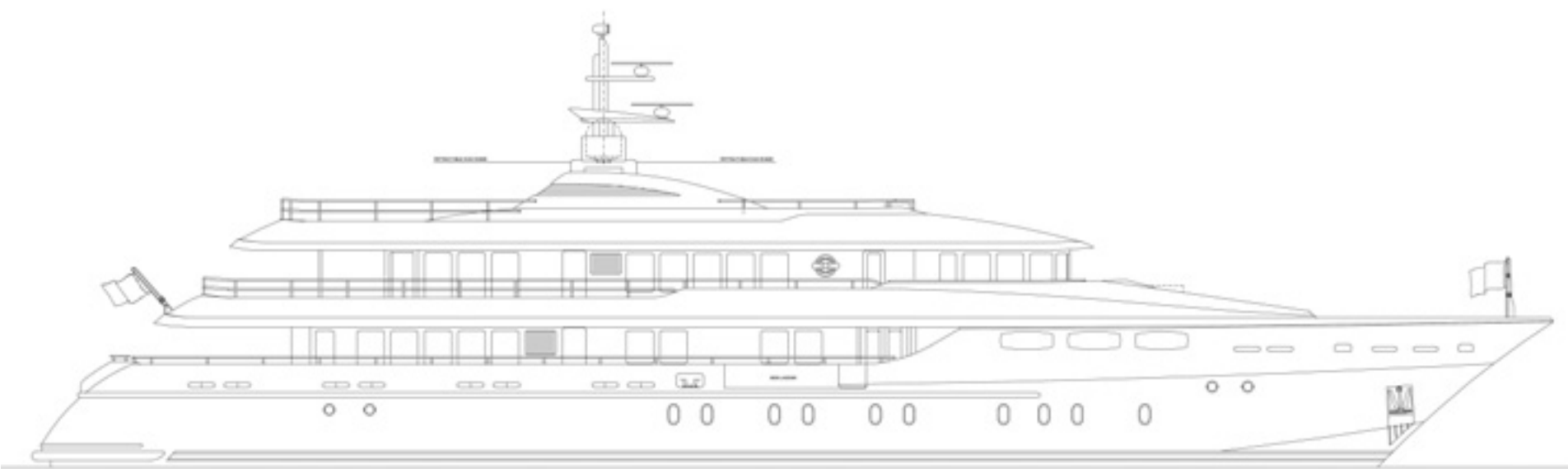
1 Luxury 6.2m Scanner Sports Tender  
1 3.2 Novamarine Jet-tag 320  
2 Wave Runner, 1 Windsurf, Water Skis, Tubes, Banana, Snorkeling  
Equipment, Fishing Gear & Scuba Diving Equipment  
CD / Book / DVD/ PS2 Game Library, Playstation 2

Builder / Designer Mondomarine Savona, Italy  
Interior Stylist Giorgio Vafiadis - Studio Vafiadis

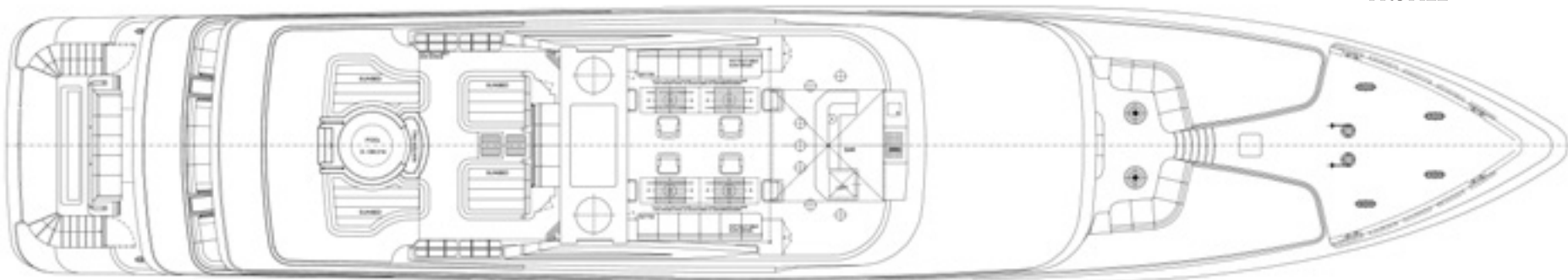


my O'CEANOS

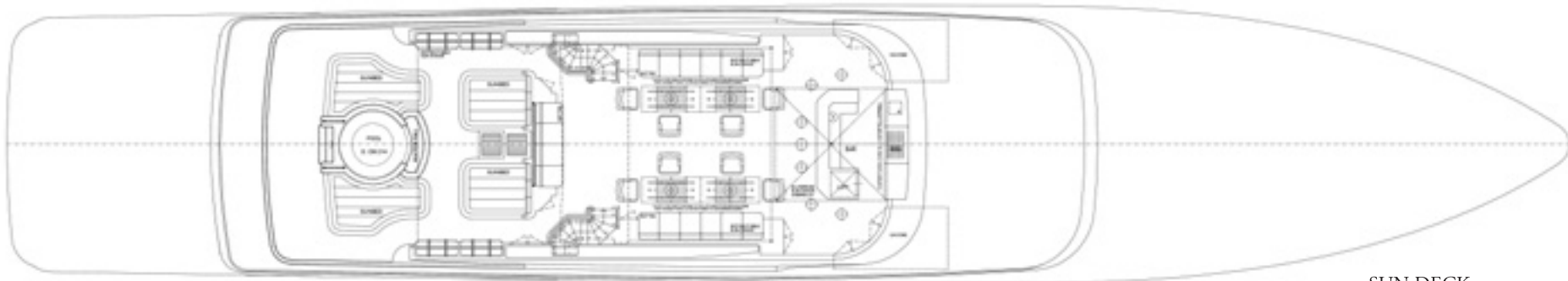
Deck Plan



PROFILE



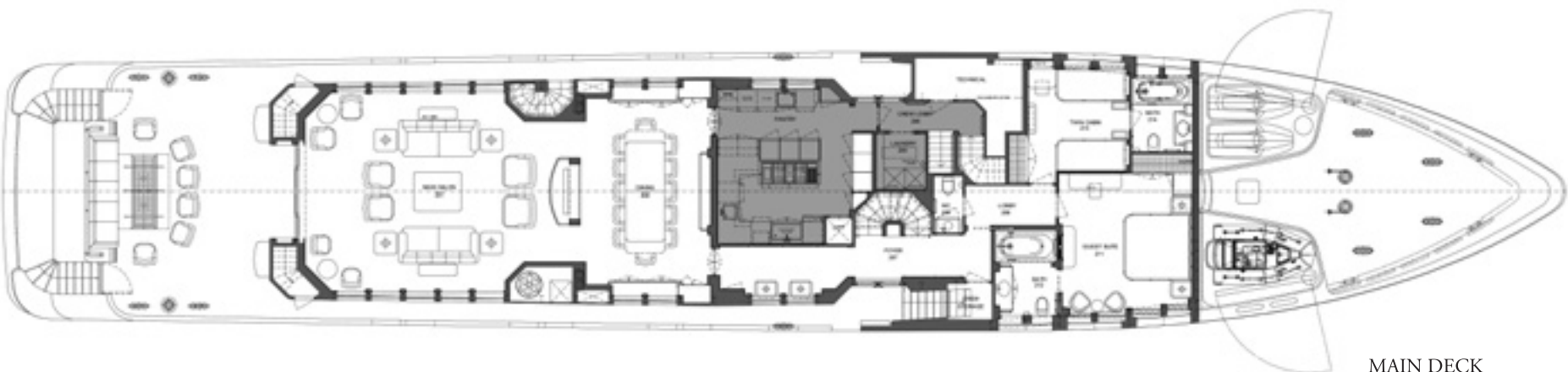
TOP VIEW



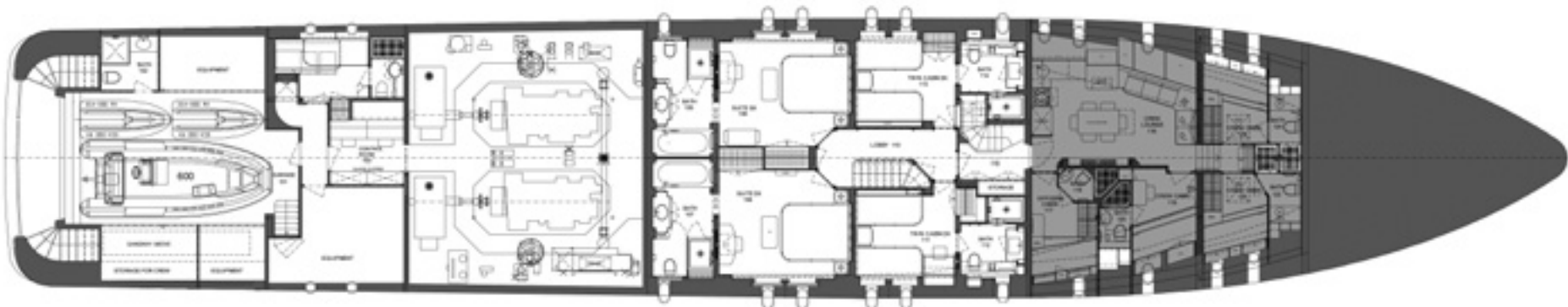
SUN DECK



UPPER DECK



MAIN DECK



LOWER DECK

CREW AREAS    VIP & GUEST AREAS



